

FIGURE 2.1 Allan Pinkerton, circa 1861. Library of Congress Prints and Photographs Division, Washington, D.C. 20540. (Courtesy of Wikipedia Commons.)



FIGURE 2.2 First director of the FBI, J. Edgar Hoover. (Courtesy of Wikipedia Commons.)

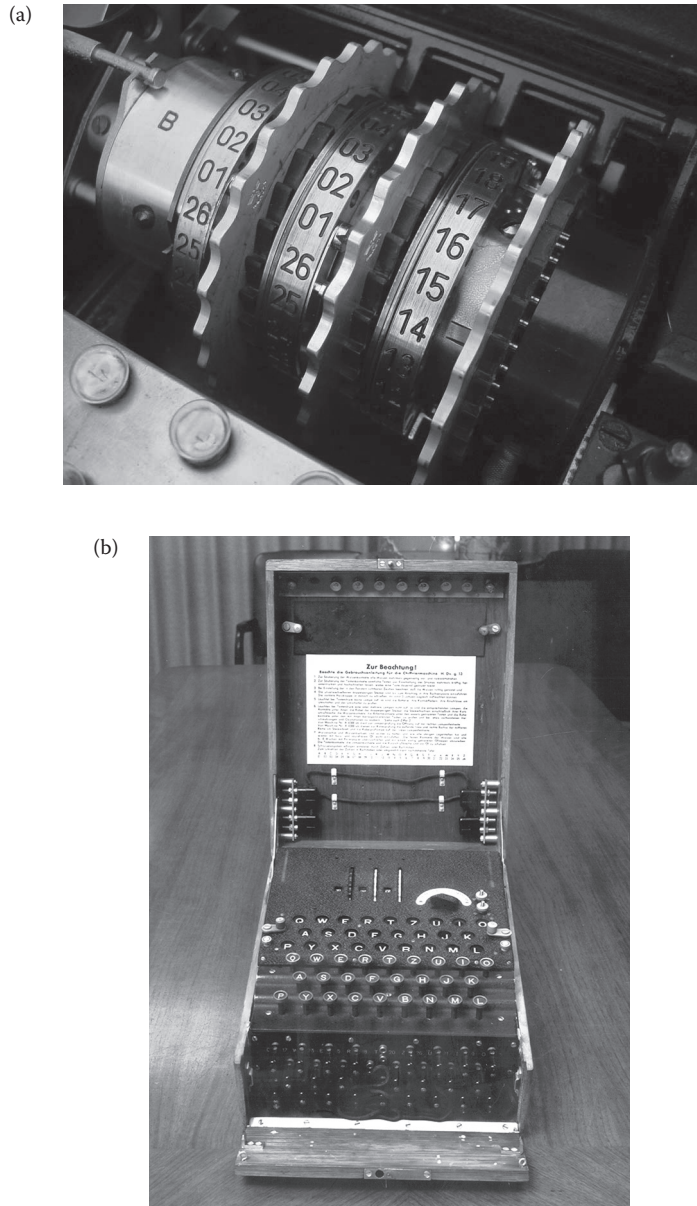


FIGURE 2.3 (a) Enigma rotor assembly. (b) A World War II enigma cipher coding machine. (Both images courtesy of Shutterstock.com.)



FIGURE 2.4 Julius and Ethel Rosenberg, separated by heavy wire screen as they leave U.S. Court House after being found guilty by jury, 1951. (Courtesy of Roger Higgins, photographer from New York World-Telegram and the Sun. Library of Congress Prints and Photographs Division and Wikipedia Commons.)



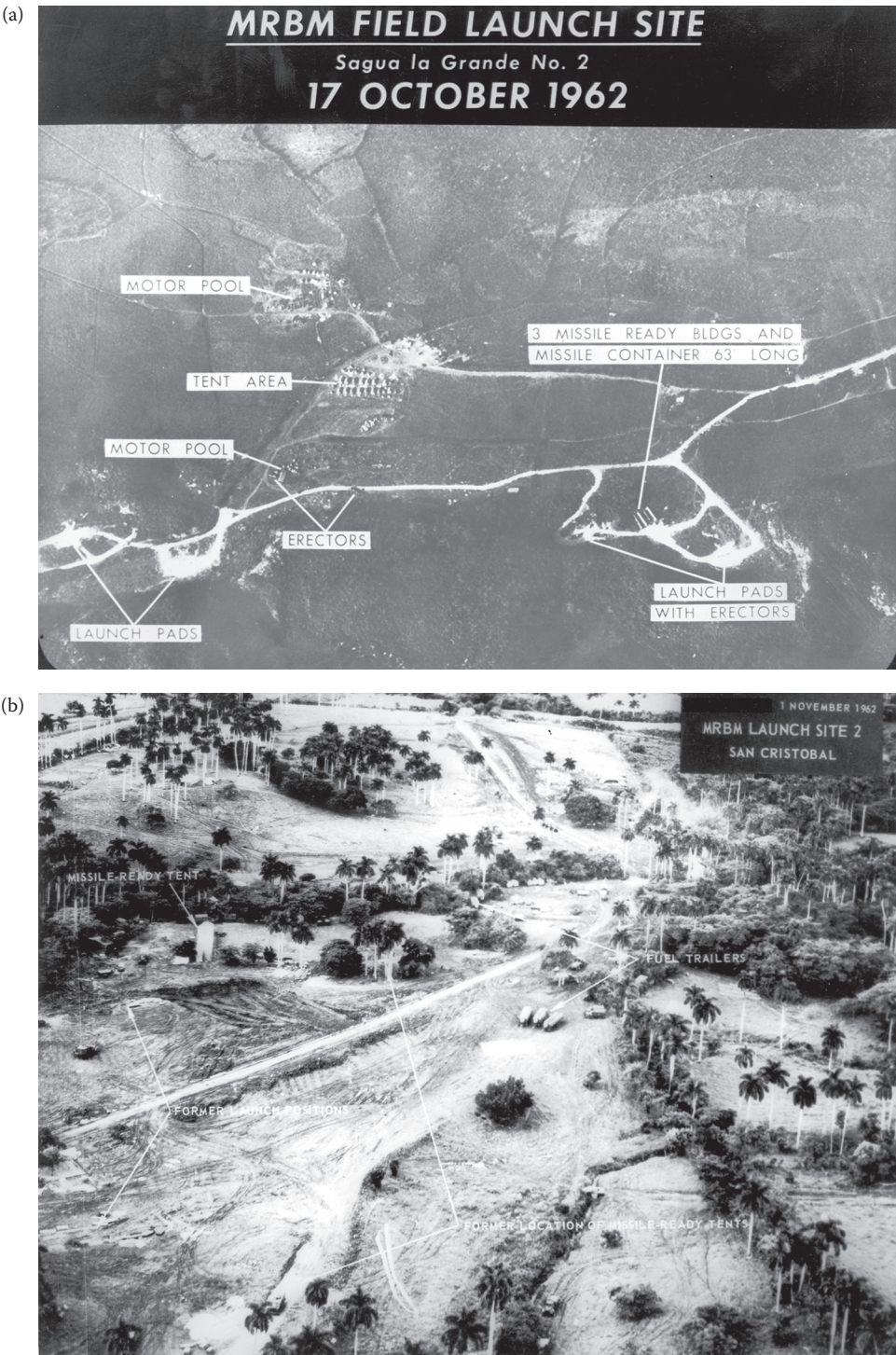


FIGURE 2.5 (a) Aerial view showing medium-range ballistic missile field launch site number two at Sagua la Grande. October 17, 1962 (U.S. Air Force photo). (b) Aerial view of San Cristobal medium-range ballistic missile launch site number two. November 1, 1962. (Courtesy of U.S. Air Force.)



FIGURE 2.6 Bombing of Pan Am Flight 103.



FIGURE 2.7 Osama bin Laden.



FIGURE 2.8 The USS Cole. (U.S. Department of Defense photo, courtesy of Wikipedia Commons.)



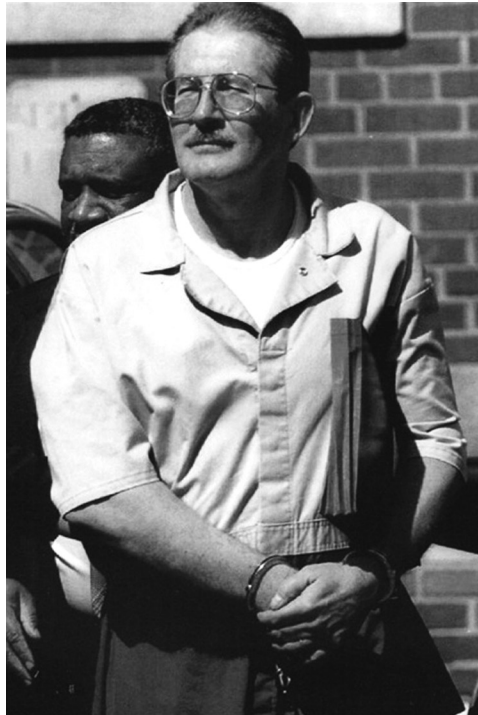


FIGURE 2.9 Aldrich Ames (<http://www.nacic.gov>). (Courtesy of Wikipedia Commons.)



FIGURE 2.10 Oklahoma City, OK, April 26, 1995—a scene of the devastated Murrah Building following the Oklahoma City bombing. (Courtesy of FEMA News.)



FIGURE 2.11 New York, NY, September 25, 2001—A firefighter surveys the remaining shell and tons of debris of the World Trade Center. (Courtesy of Mike Rieger/FEMA News.)